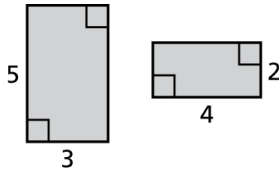


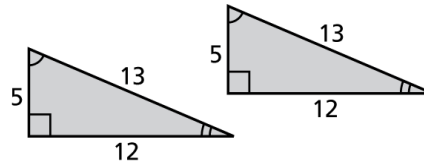
Chapter 2 Practice Quiz
For use after Section 2.4

Tell whether the two figures are congruent. Explain your reasoning.

1.

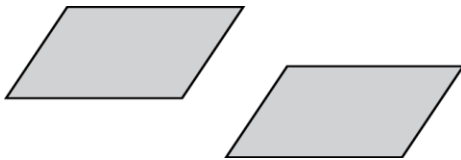


2.

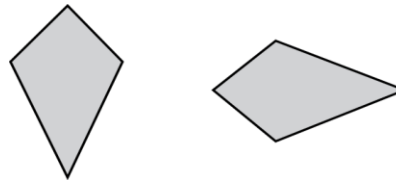


Tell whether the right figure is a translation of the left figure.

3.

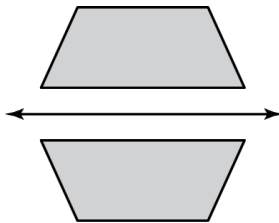


4.

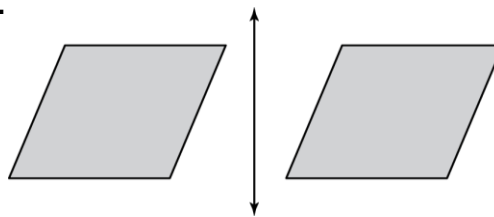


Tell whether one figure is a reflection of the other figure.

5.

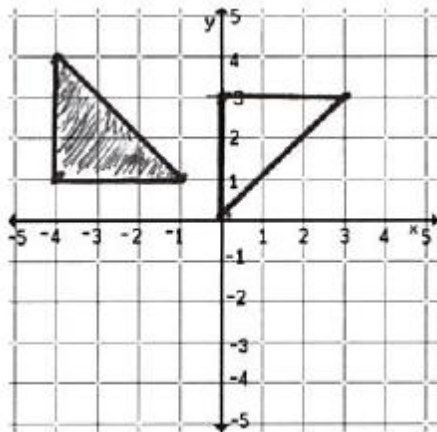


6.

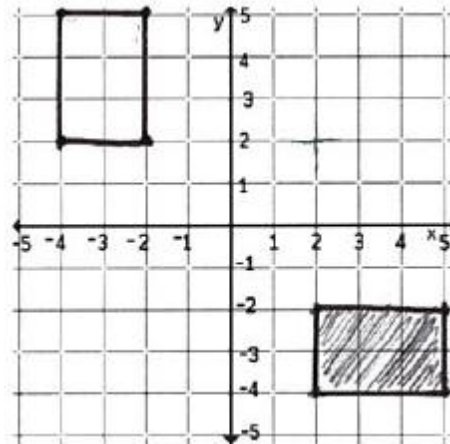


The shaded figure is congruent to the non-shaded figure. Describe a sequence of transformations in which the non-shaded figure is the image of the shaded figure.

7.



8.



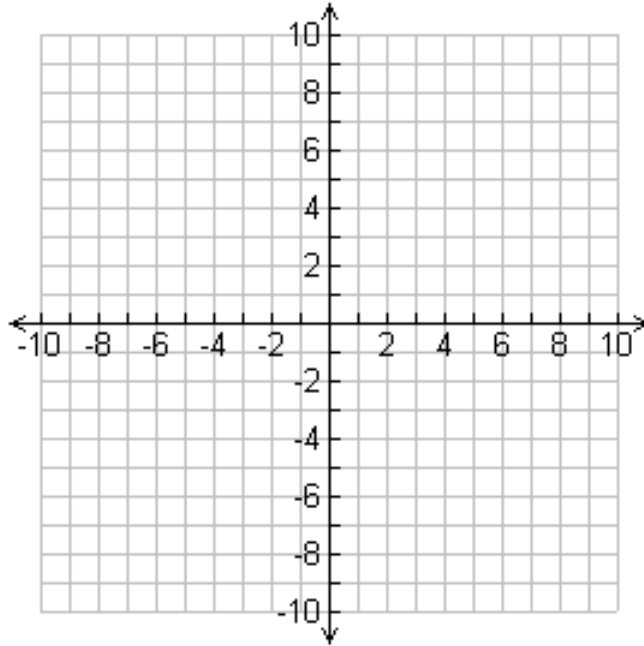
9. The vertices of a quadrilateral are $W(2, 2)$, $X(4, 3)$, $Y(5, 2)$, and $Z(4, 1)$. Translate the figure 3 units left and 2 units up. Then reflect the image in the y -axis. What are the coordinates of the final image?

W'' _____

X'' _____

Y'' _____

Z'' _____



10. The vertices of a triangle are $A(-2, 4)$, $B(1, 2)$, and $C(-2, -2)$. Reflect the triangle in the x -axis and then rotate the image 270° counterclockwise about the origin. What are the coordinates of the final image?

A'' _____

B'' _____

C'' _____

